

 **RELEASE NOTES**

Altair[®] Inspire[™] Mold

2022.1 and 2022.1.1

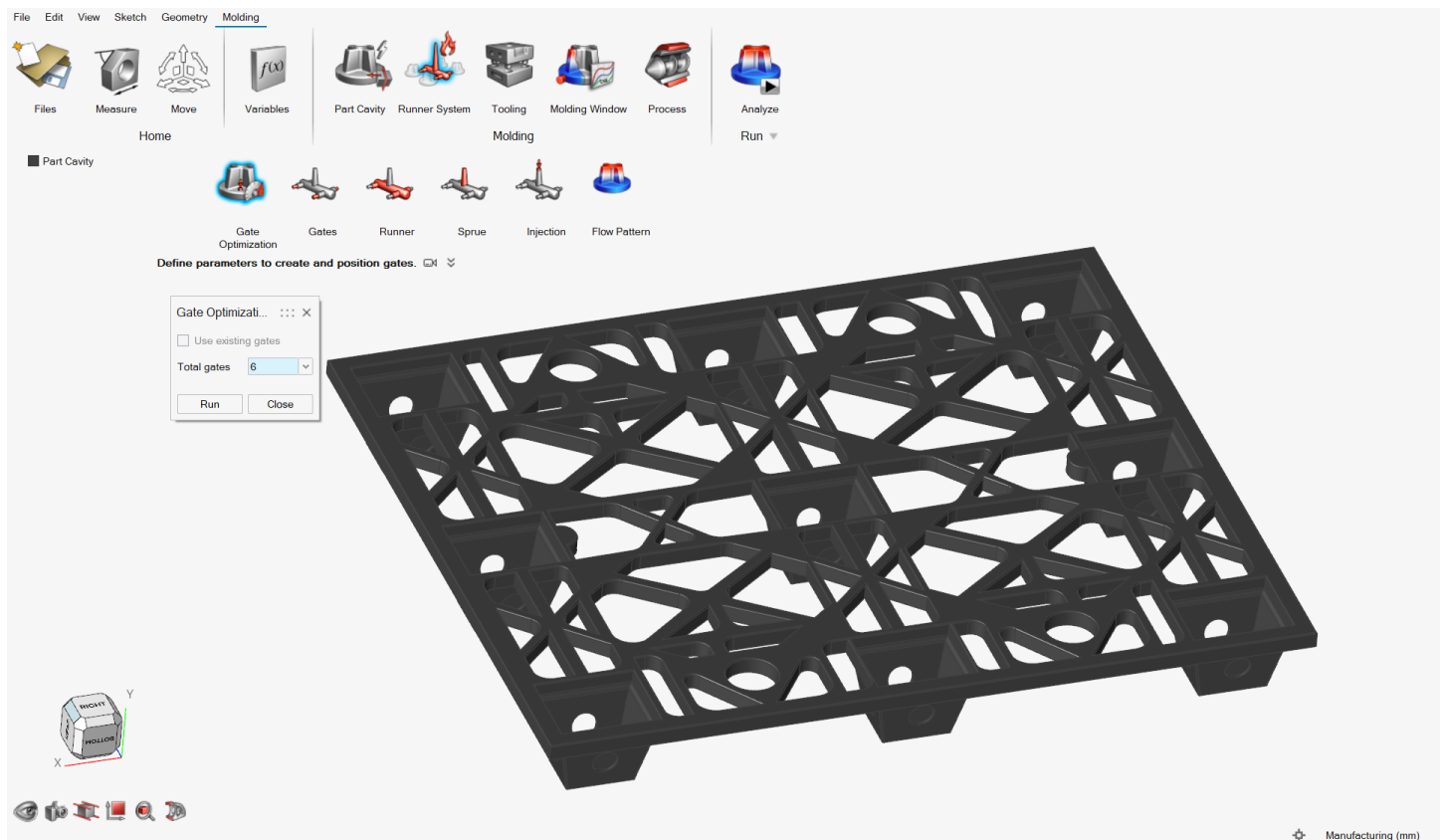
New Features and Enhancements 2022.1

Altair Inspire Mold 2022.1 includes the following new features and enhancements.

Release Highlights

Optimize Gate Location Tool

Inspire Mold can now calculate the optimal gate locations for your model. You can specify number of gates and whether to use existing gates in the calculation.

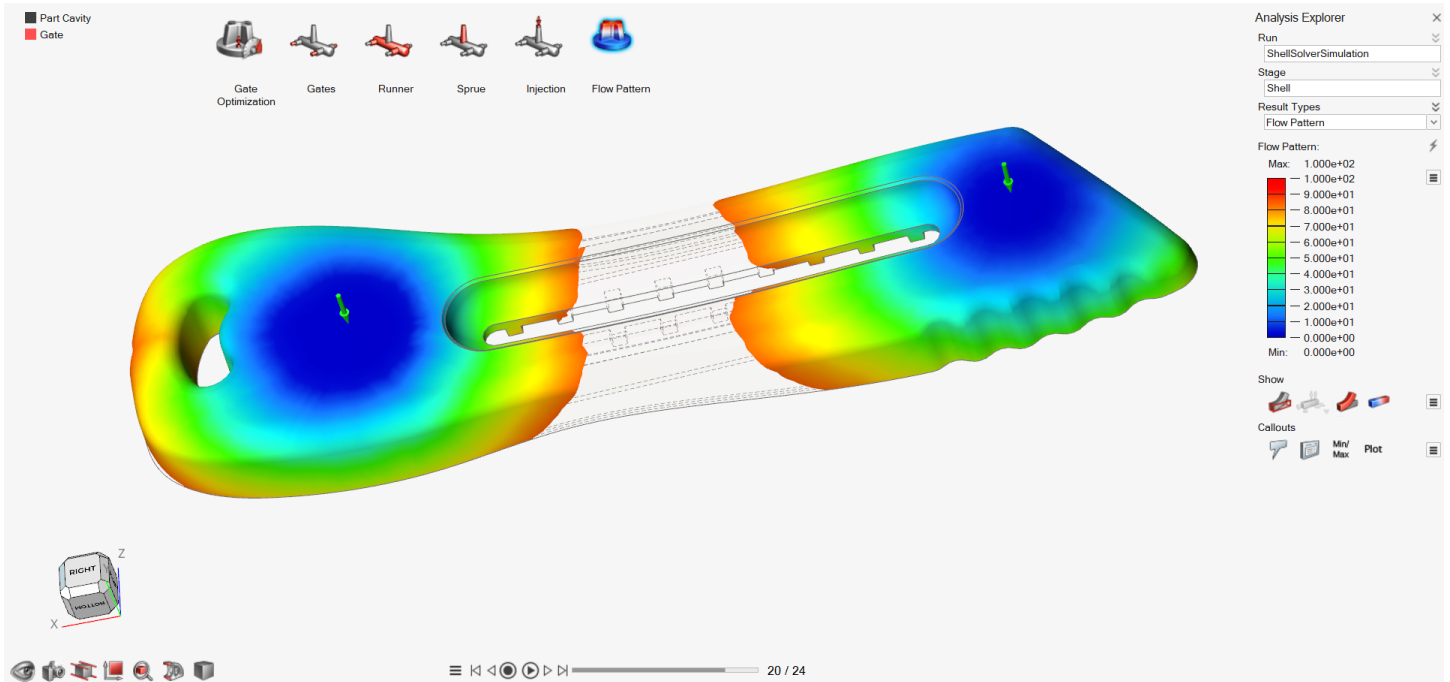


This will help you to place gates in the optimal locations

Flow Pattern Preview Tool

You can now see a preview of the predicted flow pattern in the part cavity using a quick analysis.

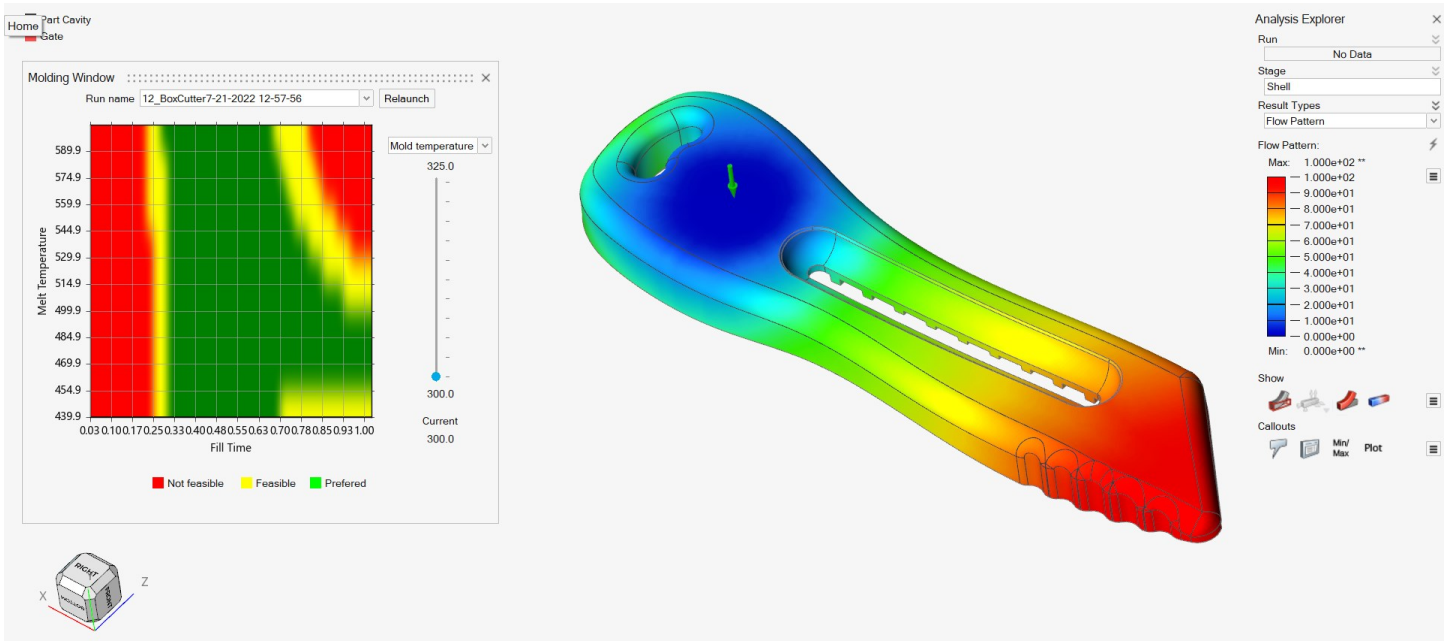
This tool will help you to previuslize the flow front evolution depending of your gating design.



Molding Process Window Tool

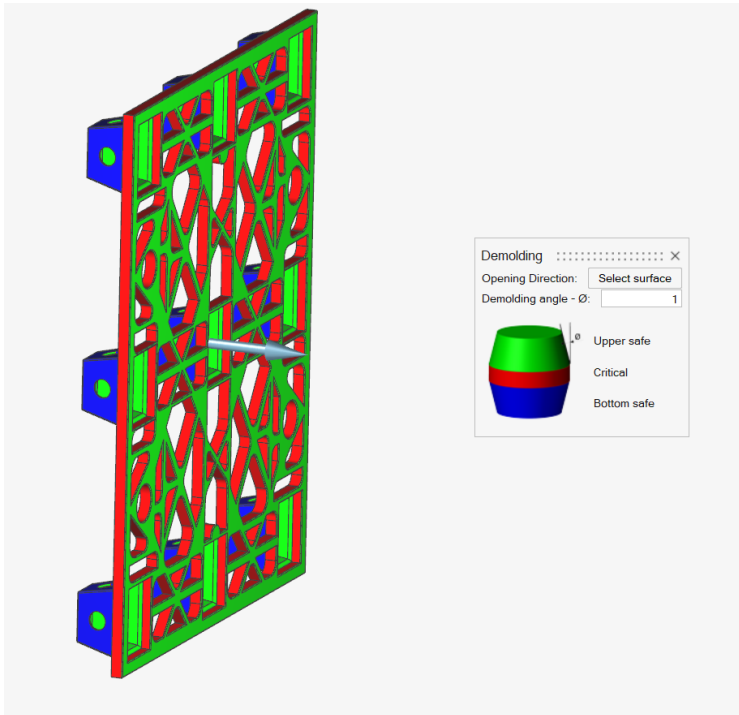
Optimize your process conditions

You can perform an optimization analysis for your part and gating system to obtain the optimal process conditions such as mold temperature, melt temperature, and fill time.



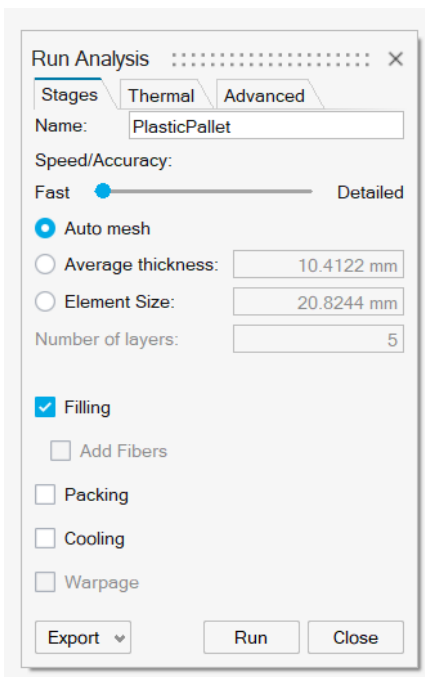
Demolding Angle Tool

You can now view the surfaces that may cause the part to stick during demolding, change the demolding tolerance angle, and change the axis along which the mold will open.



New Meshing Options

In the Run Analysis Window, you now have the option to allow Inspire mold to automatically define the model's mesh size, and specify the mesh factor for the gate, runner, and sprue.



Inspire Mold now includes two new meshing options in the Run Analysis window:

- Full Auto Mesh lets Inspire Mold automatically define the model's mesh size.
- Mesh Factors lets you specify the mesh factors for your model's gate, runner, and sprue. (If this feature is not enabled, mesh factors will not be used.)

New Features and Enhancements 2022.1.1

Altair Inspire Mold 2022.1.1 includes the following resolved issues.

Resolved Issues

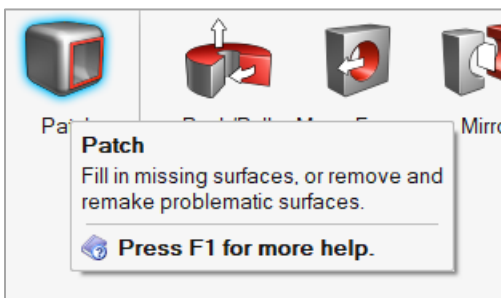
- Fixed an issue where certain parameters (density and specific heat) would not import correctly from material data .xml files [CMG-1725]
- Added new files to minimize false positives detected by antivirus programs

Learn More About Inspire

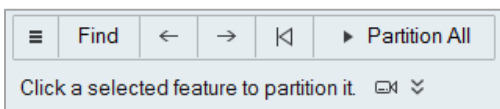
You can learn more about new and existing features in Inspire using the following resources:

In-Application User Assistance

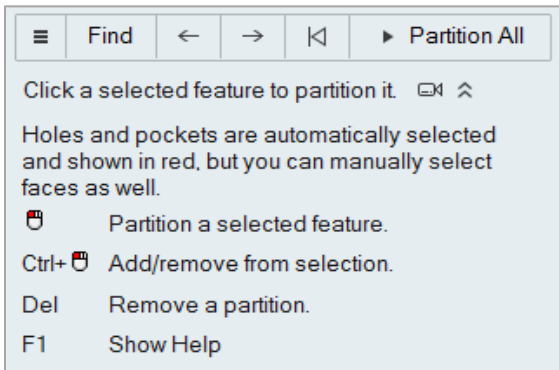
Inspire provides two types of user assistance. **Enhanced tooltips** appear when you hover over icons and other features. They describe what the tool does.



Workflow help appears when you select a tool that opens a guide bar or microdialog. The text prompts you what to do next.

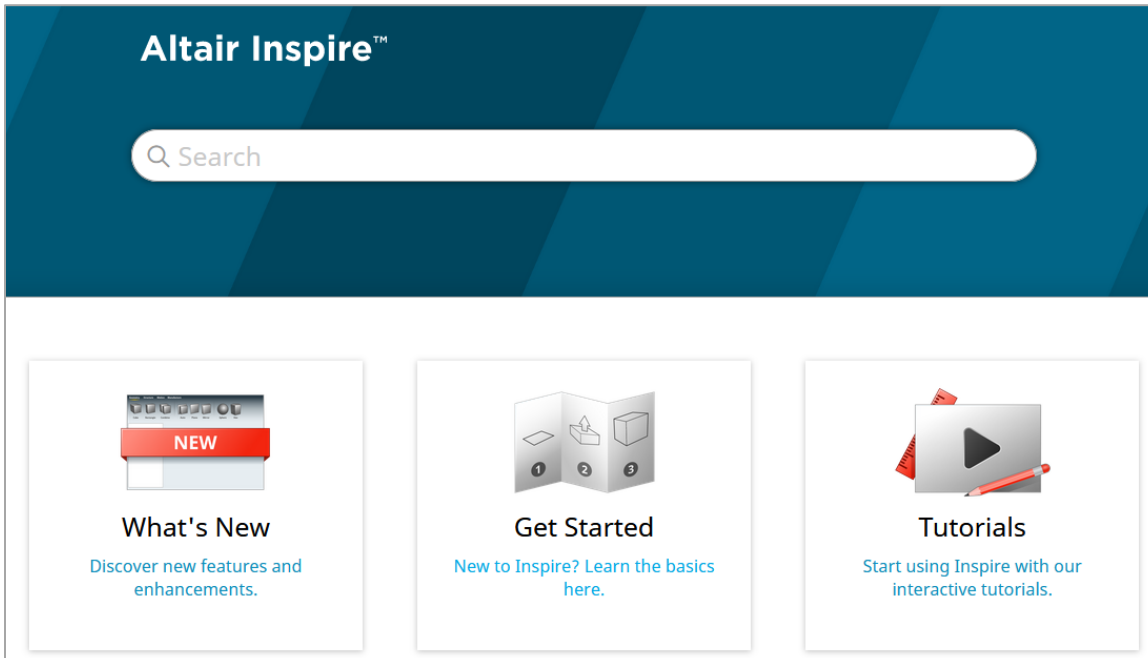


Click  to view additional tips and shortcuts. Some tools also include a video .



Online and Offline Help

Press **F1** or select **File > Help > Help** to view the online help.



You can download an offline version by selecting **File > Help > Download Offline Help**. An internet connection is required to download.

