

▶ **RELEASE NOTES**

Altair[®] Inspire[™] Cast

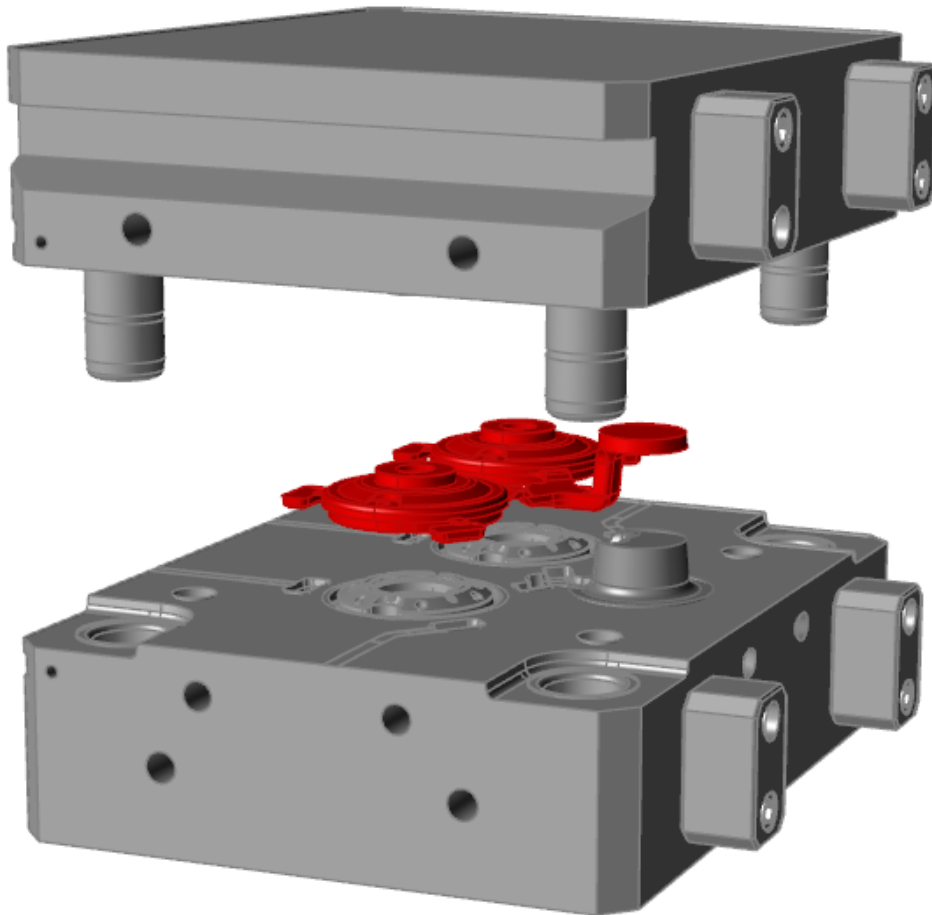
2022.2 and 2022.2.1

New Features and Enhancements 2022.2

Altair Inspire Cast 2022.2 includes the following new features and enhancements.

Demolding for Solidification Analysis

You can now run demolding for both solidification and thermo-mechanical analysis. This new analysis type will be shown as an additional stage in the results window. You will be able to simulate what happens while the part is inside the mold and after the part is released.



Analysis Type:

- Run a filling analysis
- Run a solidification analysis
- Compute deformation

Fast Robust

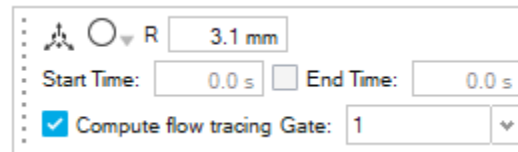
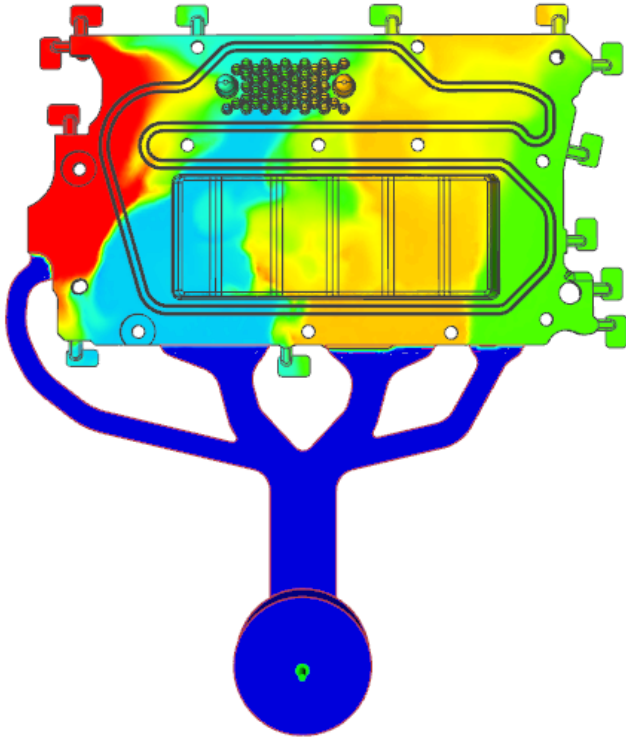
Open Mold

Temperature:

Elapsed time:

Auto Trace ID Material Tracking with Runner

Updated trace ID allows you to automatically track material as it enters the mold through each ingate during a filling analysis. When a runner is present, the software will recognize the different inlets and assign a different color to material that enters the mold through each ingate.



Additional Changes and Enhancements for 2022.2

- PIQ2 diagram window has been simplified to improve process parameter window usability.

Online Help

Dark Theme for Online Help

Use the button in the footer to toggle between dark and light themes.

Note: Firefox does not support dark theme for locally installed help files.

Version Navigator for Online Help

Navigate to other versions of the Altair Simulation online help.

Note: This feature is not supported in locally installed help files. Online help for previous releases does not have this feature and remains unchanged.

Cookie Consent

The help footer now contains a cookie consent option. Click the link to review and revise your settings.

New Features and Enhancements 2022.2.1

Resolved Issues

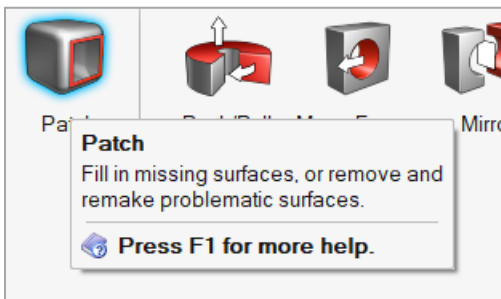
- Fixed an issue with thermomechanical analysis and filters [CCS-3309]
- Added missing translations [CCS-3298]
- Fixed an issue in the analysis explorer where casting stage names were not appearing for old models in non-English languages [CCS-3339]

Learn More About Inspire

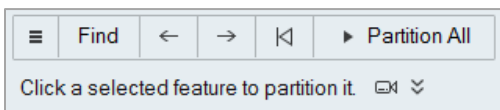
You can learn more about new and existing features in Inspire using the following resources:



In-Application User Assistance

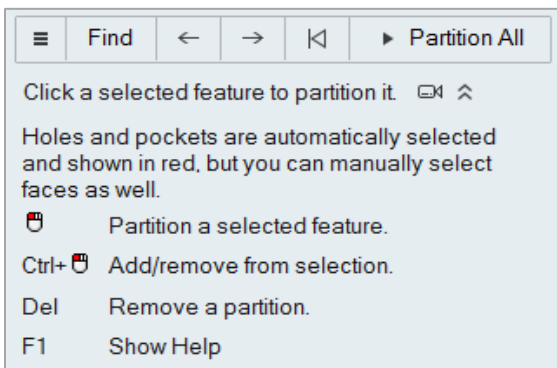
Inspire provides two types of user assistance. **Enhanced tooltips** appear when you hover over icons and other features. They describe what the tool does.



Workflow help appears when you select a tool that opens a guide bar or microdialog. The text prompts you what to do next.

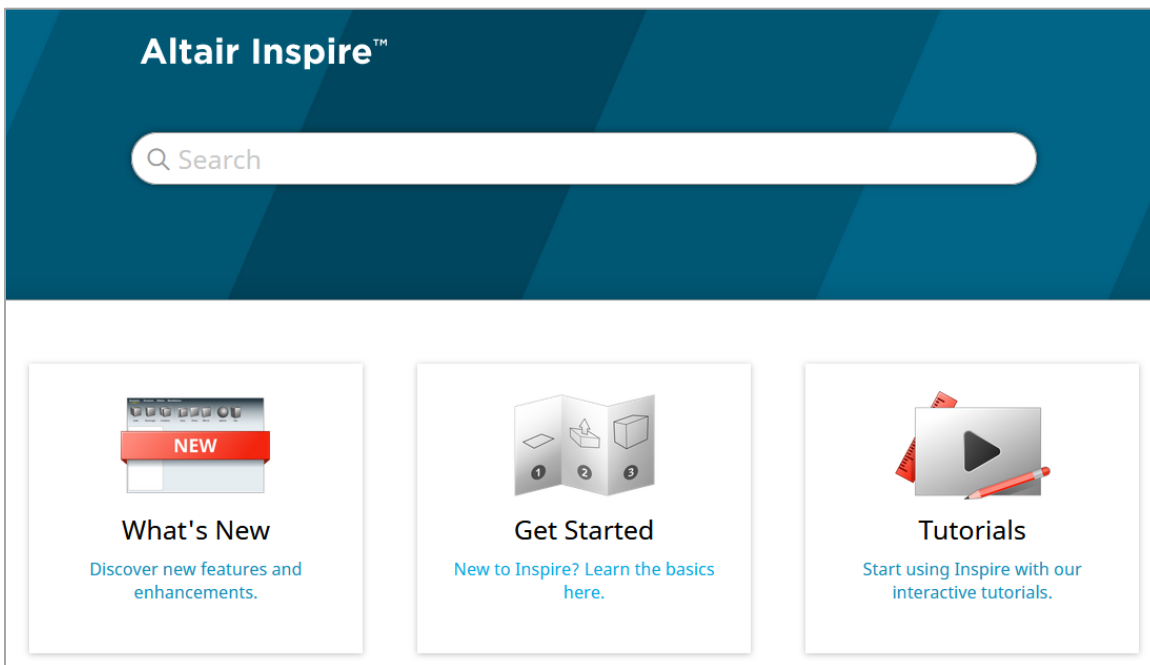


Click  to view additional tips and shortcuts. Some tools also include a video .



Online and Offline Help

Press **F1** or select **File > Help > Help** to view the online help.



You can download an offline version by selecting **File > Help > Download Offline Help**. An internet connection is required to download.

