

 **RELEASE NOTES**

Altair[®] Inspire[™] Cast

2022.3

New Features and Enhancements 2022.3

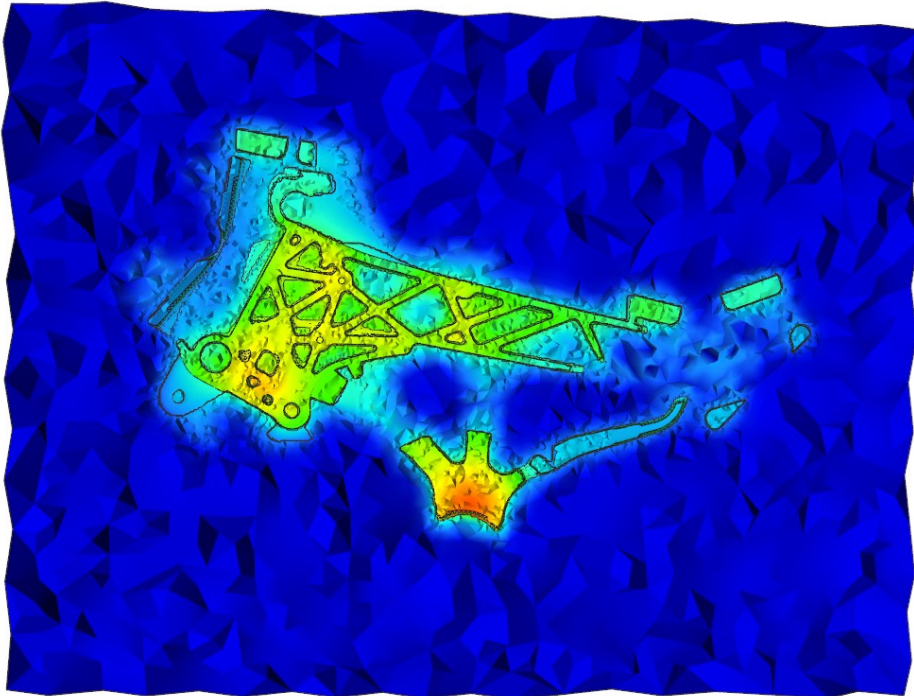
Altair Inspire Cast 2022.3 includes the following new features and enhancements.

New Meshing Strategy for Non-Conforming Mesh

Inspire Cast 2022.3 includes a new meshing strategy that:

- Reduces mesh requirements:
It is no longer necessary to perform geometric operations to detect contacts. Inspire Cast's new algorithm automatically detects and defines the connections between different components.
- Makes the mesh automation much more robust:
Since it is not necessary to perform geometric operations and the mesh is now generated component by component, the simplified meshing strategy is much more robust.
- Solves most meshing challenges when analyzing a model with multiple components:
For models with many components, connections between components are often complex and challenging to define geometrically. The new strategy supports non congruent meshes, thus automatically resolving this challenge.

This improvement does not affect how you use the product.

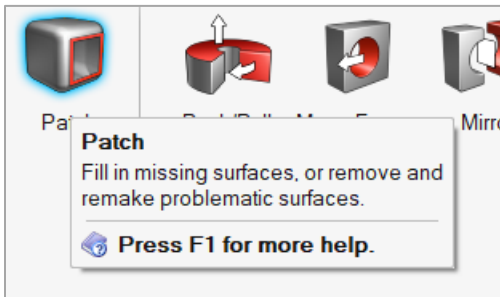


Learn More About Inspire

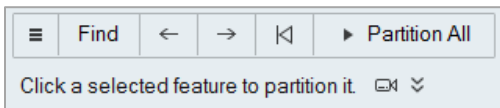
You can learn more about new and existing features in Inspire using the following resources:

In-Application User Assistance

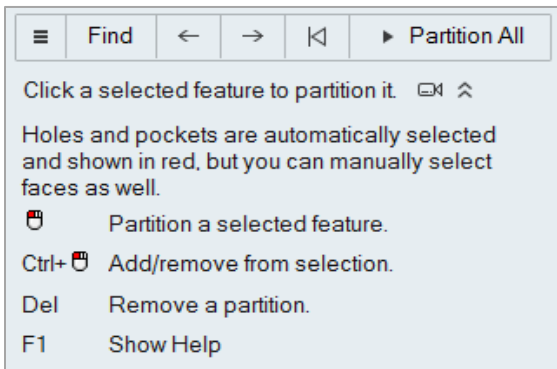
Inspire provides two types of user assistance. **Enhanced tooltips** appear when you hover over icons and other features. They describe what the tool does.



Workflow help appears when you select a tool that opens a guide bar or microdialog. The text prompts you what to do next.

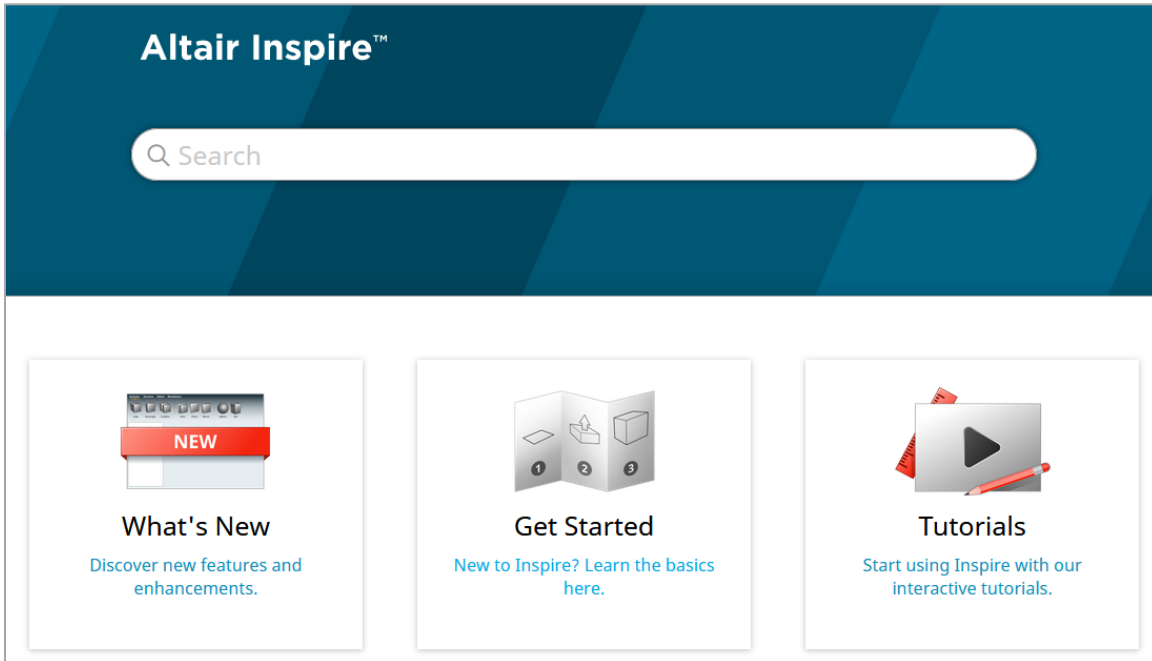


Click  to view additional tips and shortcuts. Some tools also include a video .



Online and Offline Help

Press **F1** or select **File > Help > Help** to view the online help.



You can download an offline version by selecting **File > Help > Download Offline Help**. An internet connection is required to download.

